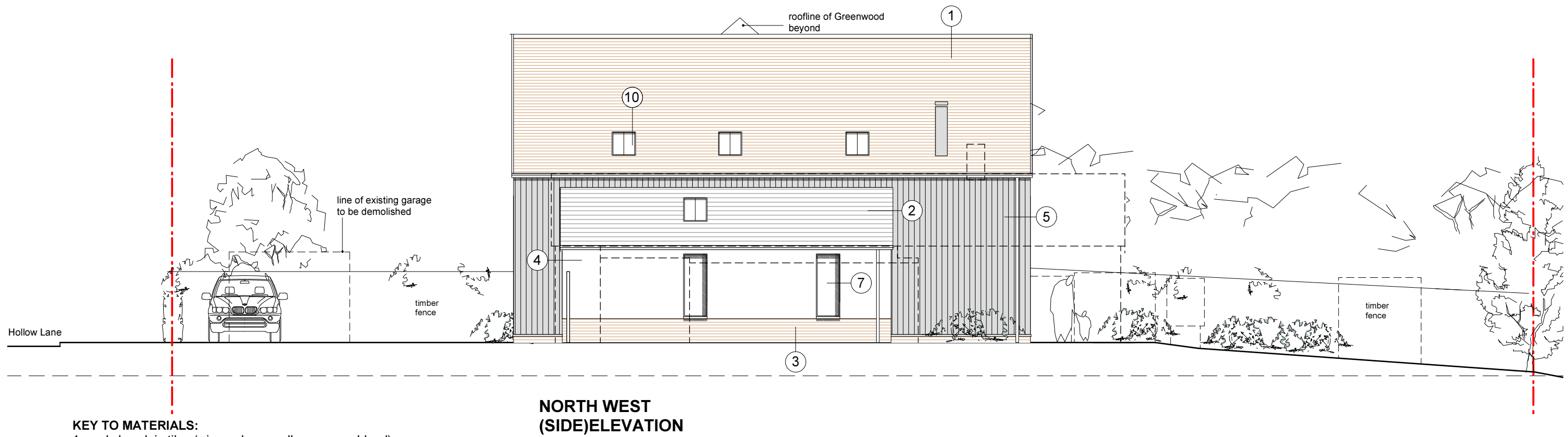


**SOUTH WEST
(REAR) ELEVATION**



**NORTH WEST
(SIDE) ELEVATION**

KEY TO MATERIALS:

- 1 - red clay plain tiles (wienerberger alban sussex blend)
- 2 - natural slate
- 3 - red brick plinth (ibstock swanage handmade light red) with chamfer/
ppc aluminium flashing (grey)
- 4 - painted render (white)
- 5 - stained siberian larch (teknos 'bourton') board on board
- 6 - ppc aluminium door frames (grey)
- 7 - ppc aluminium window frames (grey)
- 8 - stained siberian larch (teknos 'bourton') barge boards/ soffits
- 9 - solar photovoltaic panels
- 10 - velux rooflights

Project PLANCHEWAY, HOLLOW LANE, THURSTON, IP30 3RG		hitchcock architects ltd 18 The Avenue Sunbury-on-Thames Middx TW16 5ES m: 07855 522478 e: andrew@hitchcockarchitects.co.uk w: www.hitchcockarchitects.co.uk
Drawing PROPOSED SW & NW ELEVATIONS		
Drawing No. PHL - 09	Scale 1:100 @ A3	Date 25.11.2016

